

MH115 시리즈

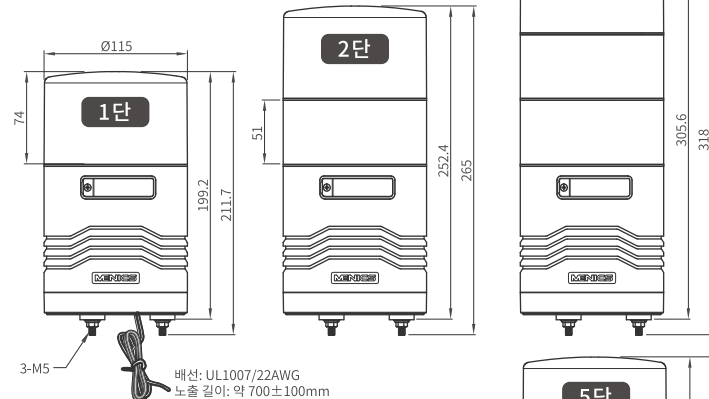
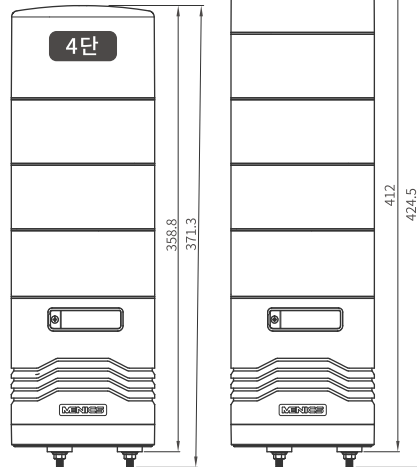


360도 전방향 사운드 바디 구조로 360도로 고르게 소리가 전달 됩니다.

- > 고품도 LED와 115mm 직경의 렌즈 및 내부 반사각 설계 구조로 원거리에서도 시인성이 매우 우수
- > 외부 표면의 매끄러운 렌즈 설계로 물과 먼지의 흡착을 최소화하여 유지보수가 효율적임.
- > 시각 신호 및 청각 신호를 360도 전방향으로 고르게 동시 전달
- > 음량 조절볼륨 내장
- > 스피커 내장형 - 9가지 사운드 출력가능 (벨로디 3음, 경고음 6음), 110dB
- > 부저 내장형 - 단속음, 95dB
- > 방수등급 - IPX5



! 렌즈 색상 배열은 고정형으로 임의로 색 배열을 변경할 수 없습니다.

[illegible]

- 팬넬의 내부 결선 단자대부에 물이 들어가지 않도록 꼭히 조치를 취하고 설치하십시오.
- 역방향 또는 행방향으로 설치하지 마십시오.
- 충분한 강도와 진동이 적은 장소에 수직(정방향)으로 설치하십시오.
- 제품의 신뢰성 확보를 위해서 가능한 팬넬의 금속면에 설치하십시오.
- 수분이나 분진 및 먼지가 많은 곳은 가능한 피하여 주십시오.

모 델	전원사양	1단	2단	3단	4단	5단
MH115S 타입	24VDC	R/Y/G/B 0.50A	RG / RB 0.54A	RYG/RBG 0.60A	RYGB 0.65A	RYGBW 0.70A
MH115K 타입 (LED+스피커 구동시)	100~240VAC	R/Y/G/B/W 0.17A	RG / RB 0.18A	RYG/RBG 0.20A	RYGB 0.22A	RYGBW 0.25A
MH115B 타입	24VDC	R/Y/G/B 0.08A	RG / RB 0.13A	RYG/RBG 0.19A	RYGB 0.25A	RYGBW 0.29A
(LED+부저 구동시)	100~240VAC	R/Y/G/B/W 0.05A	RG / RB 0.07A	RYG/RBG 0.10A	RYGB 0.11A	RYGBW 0.12A

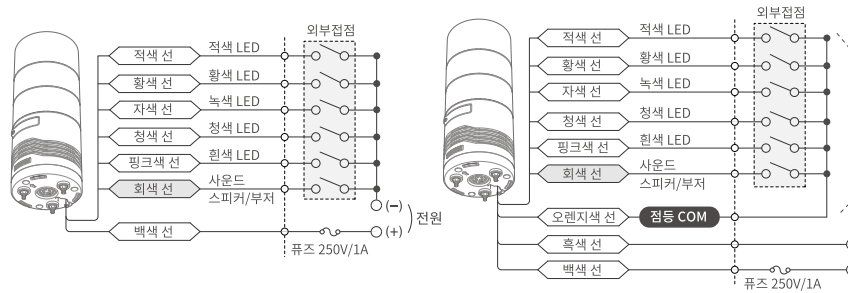
적색LED	황색LED	녹색LED	청색LED	흰색LED
13 lm	14 lm	26 lm	7 lm	50 lm

※ LED의 수명은 운영 조건이나 환경에 따라 달라집니다.

모델		MH115S 시리즈 MH115K 시리즈		MH115B 시리즈
LED기능	LED 점등 / 점멸			
전원사양	24VDC , 100 ~ 240VAC(50/60Hz)			
허용전압범위	21.6 ~ 26.4VDC 100 ~ 240VAC			
점멸속도	75±5회/분당			
사운드 구분	15W 스피커		부저	
사운드 음량 (조절볼륨내장)	최대 110±10dB		최대 95±5dB	
내장 사운드 음색	9음색-벨로디 3음, 경고음 6음 > MH115S 타입 내부 스위치로 음색선택 > MH115K 타입 외부접점으로 음색선택		외부접점으로 연결 > 단속음 (뽀뽀뽀뽀---)	
렌즈색상	적색 LED-적색, 황색 LED-황색, 녹색 LED-녹색 청색 LED-청색, 흰색 LED-투명			
재질	렌즈-PC, 반사갓-내열 ABS(니켈크로뮴금), 본체-ABS			
제품고정	수직방향전용 (실내 및 실외)			
결선방식	노출배선 연결방식			
배선사양	UL1007, 22AWG, 노출길이-약 700±100mm			
IP등급	IPX5 (외부 홈으로 침투한 물의 경우 내부 하단 틈새로 배출구조)			
인증규격	CE, RoHS			
제품중량 (F 타입기준 - 점등/점멸)	24V 타입	MH115K-1 878g MH115K-2 1.02kg MH115K-3 1.16kg MH115K-4 1.30kg MH115K-5 1.45kg	MH115S-1 855g MH115S-2 997g MH115S-3 1.14kg MH115S-4 1.28kg MH115S-5 1.45kg	MH115B-1 617g MH115B-2 762g MH115B-3 913g MH115B-4 1.06Kg MH115B-5 1.21kg
	AC 타입	MH115K-1 920g MH115K-2 1.06kg MH115K-3 1.20kg MH115K-4 1.37kg MH115K-5 1.50kg	MH115S-1 897g MH115S-2 1.04kg MH115S-3 1.18kg MH115S-4 1.34kg MH115S-5 1.49kg	MH115B-1 648g MH115B-2 794g MH115B-3 945g MH115B-4 1.10kg MH115B-5 1.24kg
내전압	24VDC - 500VAC 50/60Hz에서 1분간 100VAC - 1000VAC 50/60Hz에서 1분간 220VAC - 1500VAC 50/60Hz에서 1분간			
절연저항	10MΩ 이상 (단자와 케이스간 500VDC 메가기준)			
내진동	30Hz(주기 1분간) 복진폭 0.5mm X,Y,Z 각 방향 1시간			
사용주위온도	-15 ~ +40°C (동결 없을 것)			
보관주위온도	-20 ~ +70°C (동결 없을 것)			
사용주위습도	45 ~ 85% RH (결로 없을 것)			

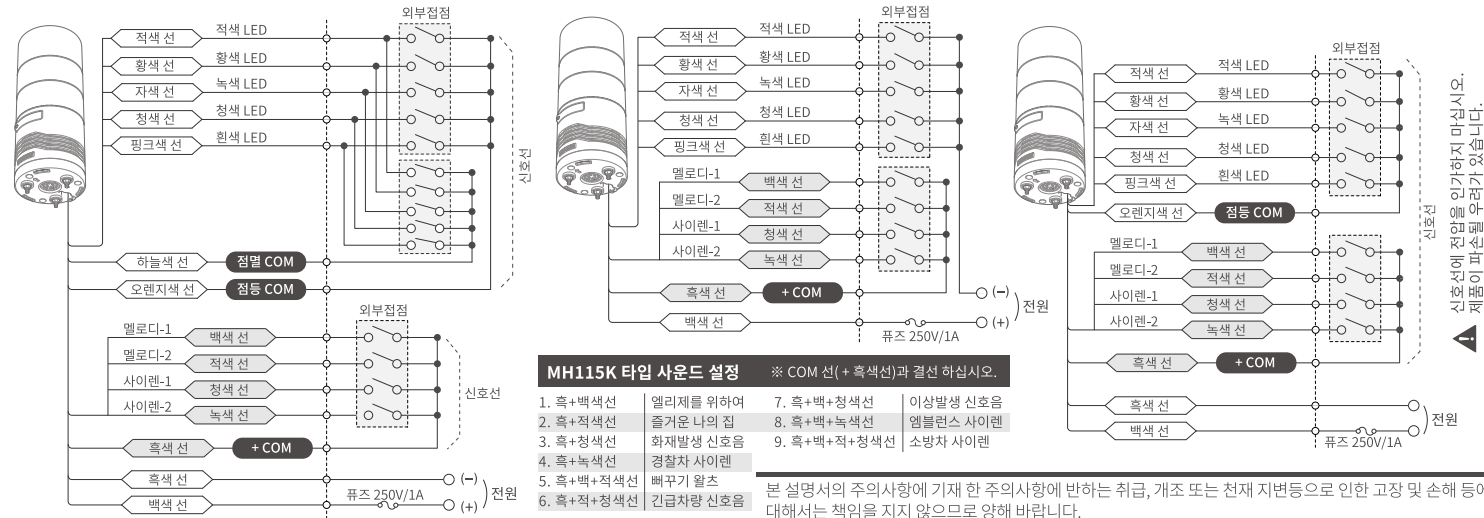
- 배선 결선 전에 반드시 전원 공급 장치를 차단하십시오.
- 직류, 교류 및 사용 전압이 틀리지 않도록 확인한 후 사용하십시오.

■ 100~240VAC 점등 타입

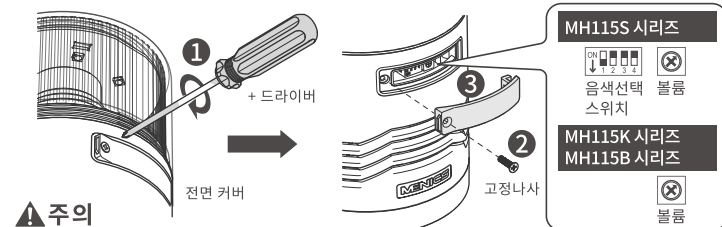


※ 결선 과정에서 흑색 신호선 + COM과 LED 오렌지 신호선 COM이 쇼트가 발생하지 않도록 주의하십시오.

■ 100~240VAC 점등 타입



• 음색 선택 및 음량 조절시, + 드라이버를 이용하여 전면 커버를 열고 닫으십시오.



1. 반드시 전면 커버가 장착된 상태에서 제품을 작동시켜 주십시오. 그렇지 않으면 물과 먼지가 들어가 고장의 원인이 됩니다.

2. 반드시 전면 커버 고정 나사를 고정 후 제품을 사용하여 주십시오. 그렇지 않으면 방수, 방진 성능이 저하됩니다.

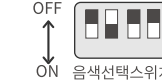
3. 전면 커버 고정 나사를 무리하게 고정하지 마십시오. 파손의 우려가 있습니다.

- 음량 조절 시, 소형 - 드라이버를 이용하여 볼륨을 가볍게 돌립니다.

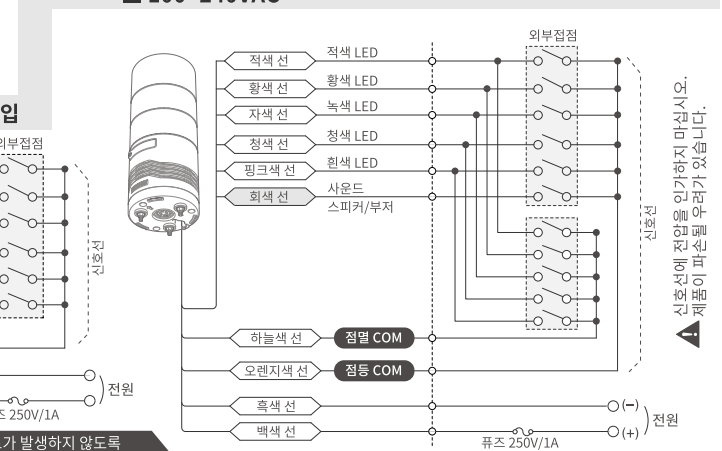


- 음량을 높이면 음색에 따라 소리가 갈라지는 현상이 발생할 수 있습니다.
- 인출 케이블 길이가 길어질 경우 소리가 갈라지는 현상이 발생할 수 있습니다.
- 불륨에 강한 충격을 가하지 마십시오. 파손될 위험이 있습니다.

- 음색 선택 시, 소형 - 드라이버(핀셋)를 사용하여 선택 스위치를 조작하십시오.
- 선택 스위치 레버를 아래 방향으로 내려야 사운드가 ON 동작합니다.



■ 24VDC 점등/점멸 타입
■ 100~240VAC



MH115S-F302-RYG



B	부저 내장형 (외부 배선 접점)
S	혼 스피커 내장형 (내부 스위치 접점) - 제품 운영시 1개 음색만 선택할 수 있음
K	혼 스피커 내장형 (외부 배선 접점) - LED 색상별로다른음색을 선택하여 사용할 수 있음.

L	점등
F	점등 + 점멸

1	1단
2	2단
3	3단
4	4단
5	5단

02	24VDC
FF	100~240VAC

R	적색 LED
Y	황색 LED
G	녹색 LED
B	청색 LED
W	흰색 LED

115mm Stacked LED Tower Indicators with Built-in Beeper

MH115 Series



MENICS
SIGNALTECHNOLOGY

The MH115 series is a large stacked LED indicator with a built-in electronic beep. It has excellent visibility from a distance and is a product that combines a high-volume 15W horn speaker or buzzer. The 360-degree omnidirectional sound body structure delivers sound evenly through 360 degrees.

- ✓ High-brightness LED, 115mm diameter lens and internal reflector design structure provide excellent visibility from a distance.
- ✓ The smooth lens design on the outer surface minimizes the adsorption of water and dust, making maintenance efficient.
- ✓ Simultaneous transmission of visual and auditory signals evenly in all 360-degree directions.
- ✓ 110dB Built-in speaker: 9 types of sound output (3 Melody sounds, 6 Warning sounds)
- ✓ Built-in buzzer: intermittent sound - 95dB / Built-in volume control
- ✓ Waterproof rating: IPX5



MH115S series MH115K series

User manual

For proper and safe use of the product, be sure to read and understand the instruction manual suitable for each product model name before use. The contents described in this user's manual are subject to change without notice in case of product improvement or specification change.

Safety Precautions

- ※ Be sure to follow the 'Safety Precautions' to prevent accidents or dangers in advance by using the product safely and correctly.
- ※ Precautions are divided into 'Warning' and 'Caution', and the contents of 'Warning' and 'Caution' are as follows.

Warning Violation of the instructions may result in serious injury or death

Caution Violation of the instructions may result in minor injury or product damage

- ※ The meanings of the pictograms displayed on manual are as follows:
▲ is a symbol to warn you that there is a risk of danger under certain conditions.

Warning

- When using it for devices that have a significant impact on human life or property (eg, nuclear control, medical devices, vehicles, railways, aviation, combustion devices, entertainment devices, or safety devices), be sure to attach a double safety device before use. Fire, personal injury, or huge property damage may occur.
- Do not disassemble or modify the product. For internal inspection or repair, please contact the head office or agency. There is a risk of fire, electric shock, and product damage.
- Do not connect, inspect, or repair while power is applied. There is a risk of electric shock.
- Be sure to use the power input voltage within the rated range. There is a risk of product damage.
- Be sure to check that the connection is correct before applying power. There is a risk of fire, electric shock, or product damage.
- Do not use outdoors or in places where there is an explosion hazard, in the presence of flammable gases, water, near flammables, or in places with a lot of vibration. There is a risk of fire, electric shock or injury.

Caution

- Do not place any obstructions to the ventilation around the product. There is a risk of product damage or deformation due to heat generation.
- In case of any abnormality in the product, immediately cut off the input power. There is a risk of fire or product damage.
- Do not use in a place with severe vibration. There is a risk of product damage.
- When cleaning, be sure to turn off the power and clean with a dry towel. There is a risk of electric shock and fire.

Ordering information

MH115 S - F 3 02 - RYG

① ② ③ ④ ⑤

① Sound, buzzer type

B	Built-in buzzer (external wiring contact)
S	Built-in horn speaker (internal switch contact) - Only 1 sound can be selected.
K	Built-in horn speaker (external wiring contact) - Different sounds can be selected for each LED color.

② LED function

L	Steady
F	Steady + Flashing

④ Voltage

02	24VDC
FF	100~240VAC

③ Stack

1	1 stack	4	4 stack
2	2 stack	5	5 stack
3	3 stack		

⑤ LED color

R	Red LED	B	Blue LED
Y	Yellow LED	W	White LED
G	Green LED		

Specification

※ LED lifespan varies depending on operating conditions and environment.

Model	MH115S	MH115K	MH115B
Classification	15W Horn Speaker		Buzzer
Volume (Built-in controller)	Max. 110±10dB		Max. 95±5dB
Built-in sound	9 tones (3 melody, 6 beep)	Intermittent sound (beep beep—)	
	Tone selection with internal switch	Tone selection with external cable	Connection with external contact

Function	Steady, Flashing
Power supply	24VDC , 100 ~ 240VAC(50/60Hz)
Allowable voltage range	21.6 ~ 26.4VDC , 100 ~ 240VAC
Flashing speed	75±5 times per minute
Lens color	Red / Yellow / Green / Blue / Transparent(White LED)
Material	Lens: PC, Body: ABS, Reflector: Heat-resistant ABS (Nickel Chrome Plating)
Mounting method	Vertical direction only (indoor and outdoor)
Ambient temperature	-15 ~ 40°C (No freezing)
Storage temperature	-20 ~ 70°C (No freezing)
Ambient humidity	45~85% RH (no condensation)
Insulation resistance	More than 10MΩ (500VDC Mega standard)
Vibration-resistant	30Hz (1 minute cycle) 1 hours double amplitude 0.5mm in X, Y, Z respective direction
Withstand voltage	24VDC - 500VAC 50/60Hz for 1 minute 100VAC - 1000VAC 50/60Hz for 1 minute 220VAC - 1500VAC 50/60Hz for 1 minute
Wiring Standard	UL1007, 22AWG, exposure length - about 700±100mm
Wiring method	Exposed wiring connection method
Degree of protection	IPX5 (In the case of water penetrating through the external groove, it is discharged through the inner bottom gap)
Certification	CE, RoHS

Current consumption

(Measured value by RMS ±10%)

Stack	LED color	MH115S/K*		MH115B**	
		24VDC	AC	24VDC	AC
1s	R/Y/G/B/W	0.50A	0.17A	0.08A	0.05A
2s	R+G/R+B	0.54A	0.18A	0.13A	0.07A
3s	R+Y+G/R+B+G	0.60A	0.20A	0.19A	0.10A
4s	R+Y+G+B	0.65A	0.22A	0.25A	0.11A
5s	R+Y+G+B+W	0.70A	0.25A	0.29A	0.12A

*When LED+Speaker is in operation **When LED+buzzer is in operation

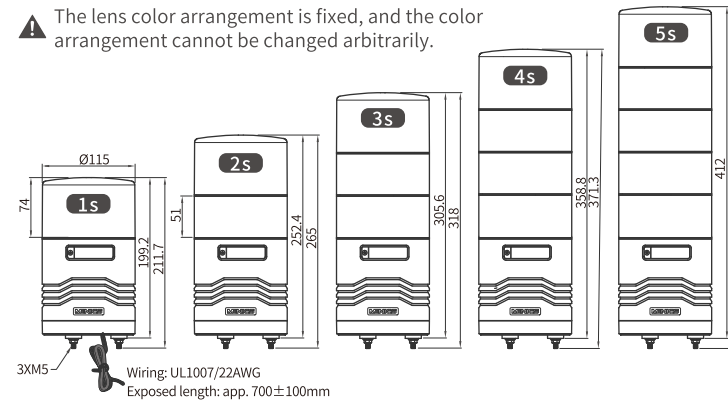
Product weight

(Based on F type - Steady/Flashing)

Stack	MH115S		MH115K		MH115B	
	24V	AC	24V	AC	24V	AC
1s	855g	897g	878g	920g	617g	648g
2s	997g	1.0kg	1.0kg	1.0Kg	762g	794g
3s	1.2kg	1.2g	1.2kg	1.2Kg	913g	945g
4s	1.3kg	1.4kg	1.3kg	1.4kg	1.1kg	1.1kg
5s	1.5kg	1.5kg	1.5kg	1.5kg	1.2kg	1.3kg

External dimensions (Unit: mm, height dimension: ±3 mm)

▲ The lens color arrangement is fixed, and the color arrangement cannot be changed arbitrarily.

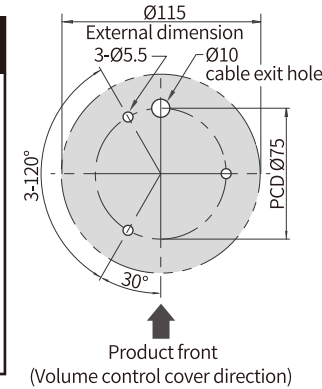


Product installation

Caution

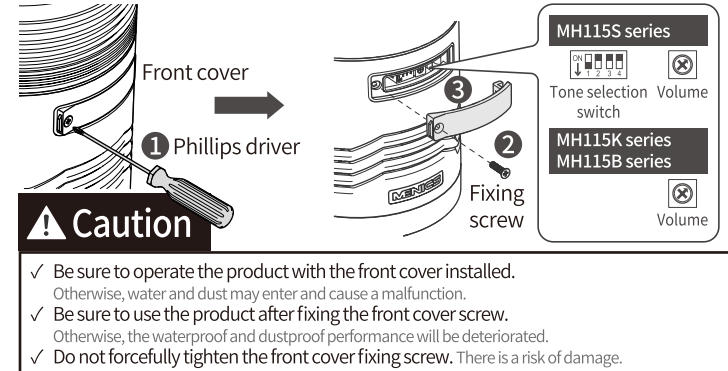
- ✓ Take measures to prevent water from the internal wiring terminal block of the panel before install.
- ✓ In order to secure the reliability of the product, install it on a metal surface such as a panel if possible.
- ✓ Install it vertically (forward direction) in a place with sufficient strength and little vibration.
- ✓ Avoid places with a lot of moisture or dust as much as possible.
- ✓ Do not install in reverse or row direction.

Mount hole dimension



Open the front cover for tone selection and volume control

✓ When selecting a tone and adjusting the volume, use a Phillips driver to open and close the front cover.



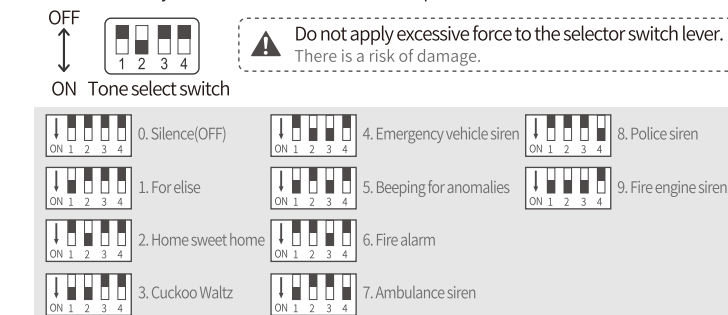
Sound volume control

✓ When adjusting the volume, turn the volume lightly using a small flat screwdriver.



MH115S series tone select switch

- ✓ When selecting a tone, use a small flat screwdriver (tweezers) to operate the selection switch.
- ✓ Sound works only when the selector switch lever is pushed down.

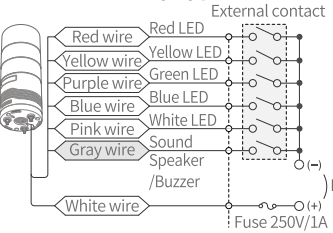


Connection diagram

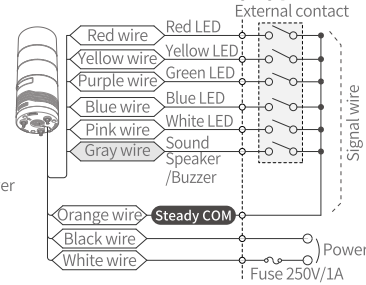
- ✓ Be sure to shut off the power supply before wiring.
- ✓ Check that the DC, AC and operating voltage are correct before use.

MH115S, MH115B series

24VDC steady type

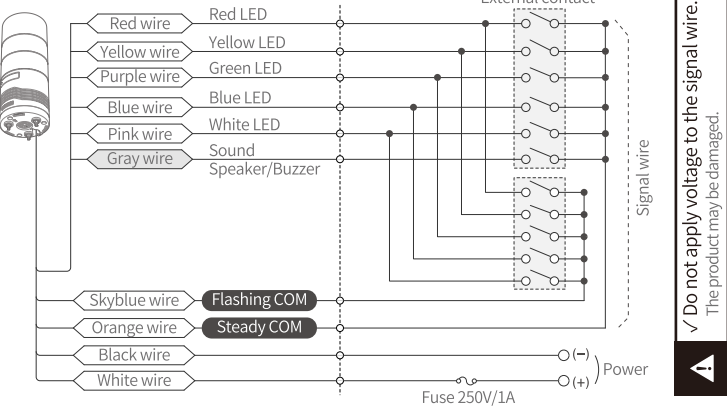


100~240VAC steady type



24VDC

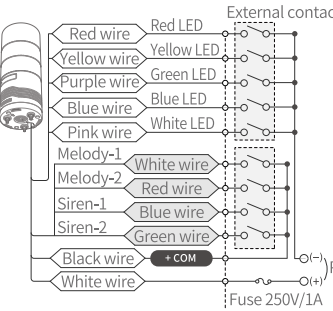
100~240VAC Steady/Flashing type



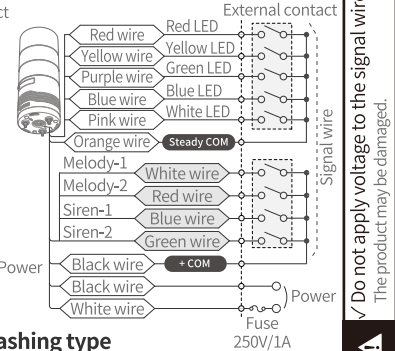
MH115K series

※ Be careful not to cause a short circuit between the black wire (+COM) and the orange wire (COM) during the wiring process.

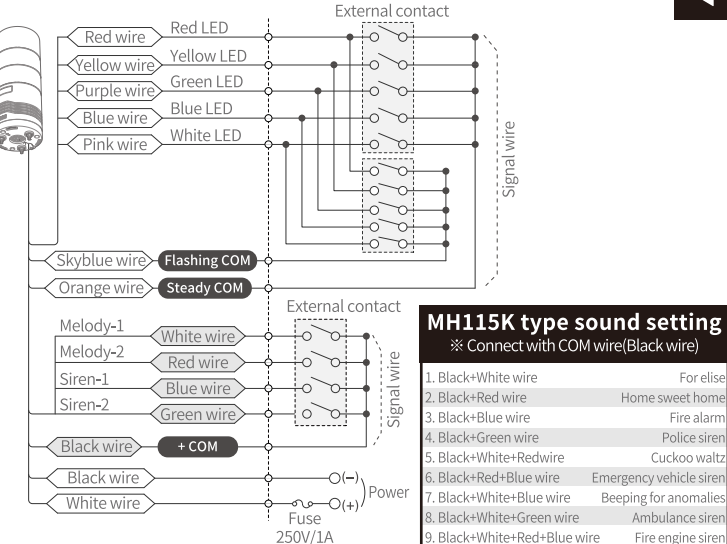
24VDC steady type



100~240VAC steady type



24VDC / 100~240VAC Steady/Flashing type



MH115K type sound setting

※ Connect with COM wire(Black wire)

1. Black+White wire	For elise
2. Black+Red wire	Home sweet home
3. Black+Blue wire	Fire alarm
4. Black+Green wire	Police siren
5. Black+White+Redwire	Cuckoo waltz
6. Black+Red+Blue wire	Emergency vehicle siren
7. Black+White+Blue wire	Beeping for anomalies
8. Black+White+Green wire	Ambulance siren
9. Black+White+Red+Blue wire	Fire engine siren

Please understand that we are not responsible for any malfunction or damage caused by handling, modification, or natural disaster that is contrary to the precautions stated in this manual.

MENICS
SIGNALTECHNOLOGY

Tel: 055-371-5200 Fax: 055-371-5202
e-mail: menics77@naver.com
http://menics.co.kr
118-1, Ungbigongdan-gil, Yangsan-si, Gyeongsangnam-do, Korea, 50524